

TECHALOGIC

FHD 1080P

TEC8000 8'000mah Powerbank + Wireless Charger



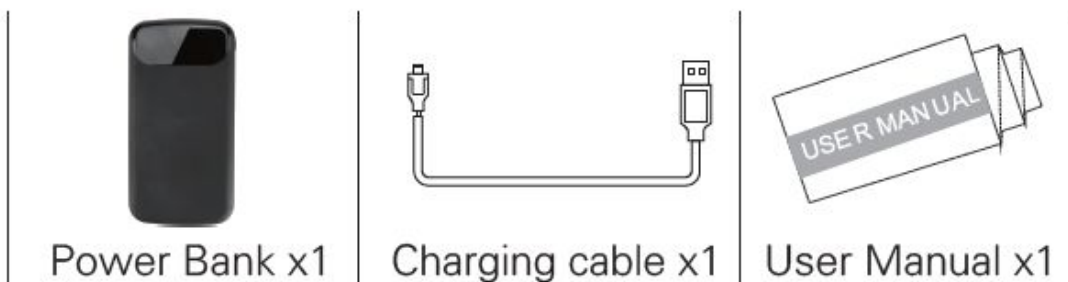
User Manual

Techalogue.co.uk

Specification

Capacity	8000/10000mAh	Dimension	138x71x16mm
Input	5V/2A(max)	Output1/2	5V/2.1A(max)
Wireless charger(optional)	5W		

Package contents



Product Layout

① Micro USB Input

② Type-C Input

③ USB Output1

④ USB Output2

⑤ LCD Display

⑥ Light up Logo Area

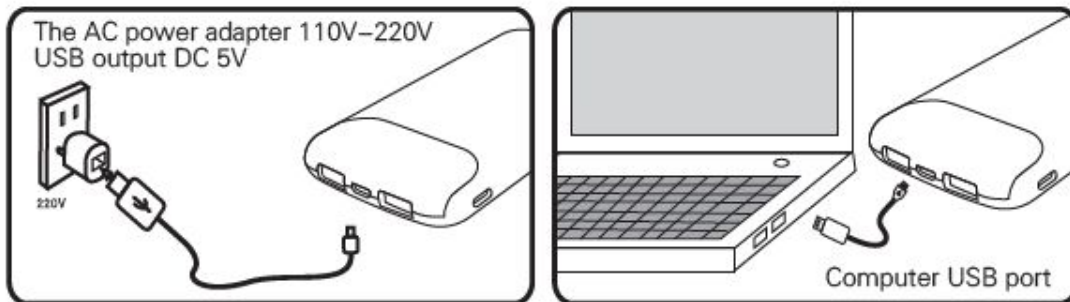
⑦ Power Button

⑧ Wireless charger area (optional)



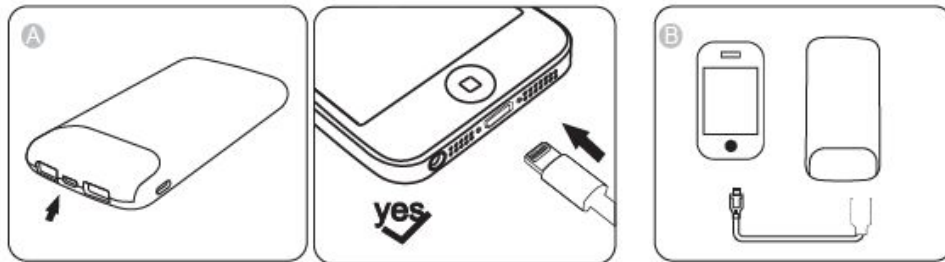
Operating Introduction

1. Charging Power Bank



- 1). Connect the Micro usb connector or Type-C connector of a USB charging cable into the input port of power bank, and connect the USB connector to a power supply with USB output(not included). We recommend power supply with a DC 5V 1-2A USB output.
- 2). When charging Power Bank,the LCD display is on, and the symbol 'IN' starts flashing, It shows the battery power percentage at the same time. When fully charged, It shows the battery power 100%.
- 3). Note: Fully charging the power bank before using the power bank at the first time. Recharge the power bank once every three months when not in use or seldom used.

2. Charging Mobile devices



1). Wired Charging

Connect the USB connector into the USB output of Power bank, and connect the other end connector into the charging port of your device which needs to be charged. When charging mobile device, the LCD display is on, and It shows 'out' and battery power percentage.

2). Wireless charging (Optional)

Press the power button, LCD display is on. Put your smartphone on the center of the wireless charger area and the symbol ' ((••)) ' is on.

Note: Make sure your smartphone is fit for Qi standard receiving equipment.

Troubleshooting

1. Press the power button, If the power percentage is low, battery is running out soon, please recharge.
2. This power bank can automatically identify equipment that need to charge, If there is no equipment on it, the power bank will be turned off after 30 seconds.
3. For wireless charging, your mobile device must be equipped with a Qi wireless receiver. The device can automatically identify a Qi-compatible device placed on it.
4. If the center point of the receiving terminal is deflected over 10mm from the center point of transmitting terminal, the power bank will be turned off automatically.
5. If wired charging is not working properly, please try a different charging cable, since the connector may become loose due to wearing.
6. During charging, the device may become warm due to high currents and resistance, especially during wireless charging. To reduce temperature, avoid running intensive applications or using GPS on your mobile device when charging.

Cautions:

Read all the instructions and warnings carefully prior to using this product.

- The power bank will generate heat when charging. Always charge in a well-ventilated and open-air area. Do not charge under pillows, blankets, clothing or on flammable surfaces.
- Keep the power bank away from heat sources, direct sunlight, combustible gas, humidity, water or other liquids.
- Do not disassemble, open, microwave, incinerate, paint or insert foreign objects into the power bank.
- Do not subject the power bank to mechanical shock such as crushing, bending, puncturing or shredding. Avoid dropping or placing heavy objects on the power bank.
- Do not short-circuit the power bank or store it in a receptacle where it may be short-circuited by other metallic or conductive objects.
- Do not operate the power bank if it has been wet or otherwise damaged, to prevent against electric shock, explosion and/or injury. Contact the dealer or authorized agent.
- Power bank usage by children should be supervised.



Thank you for choosing Techalogic

If you have any questions regarding the operation of your camera, please don't hesitate to contact us and we will be more than happy to assist you.

